

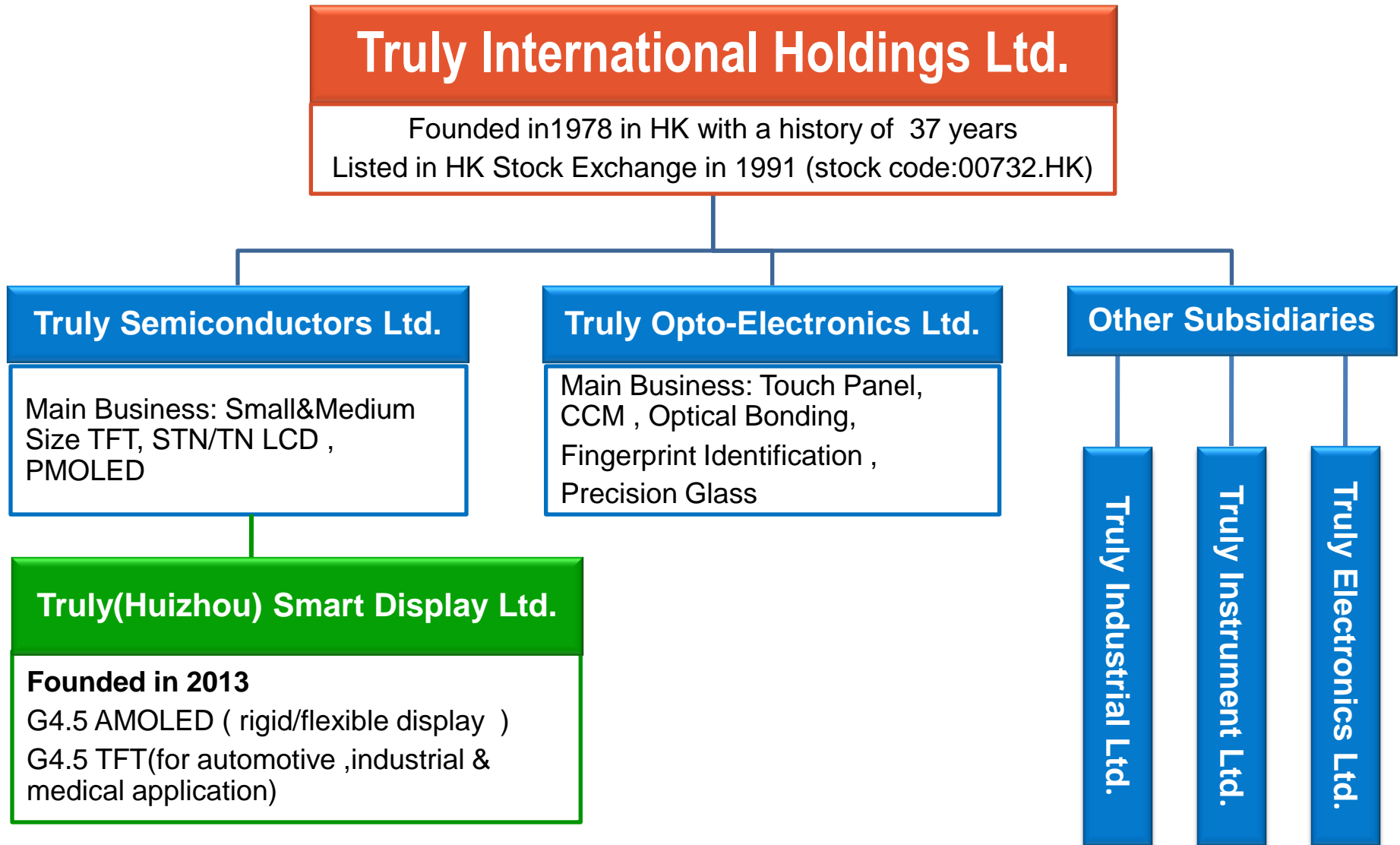
# 信利(惠州)智能显示有限公司

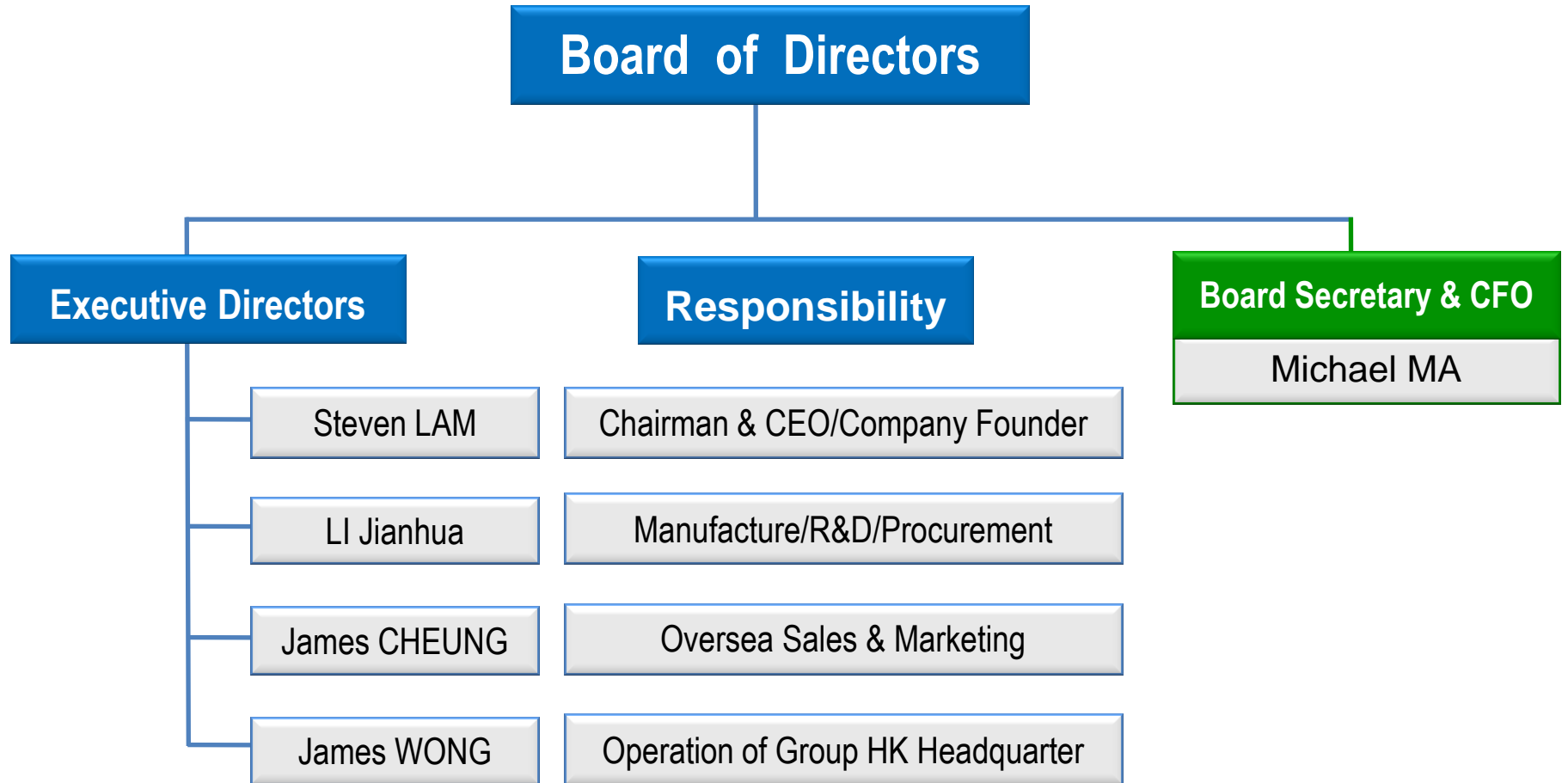
## Truly (Huizhou) Smart Display Limited

201604

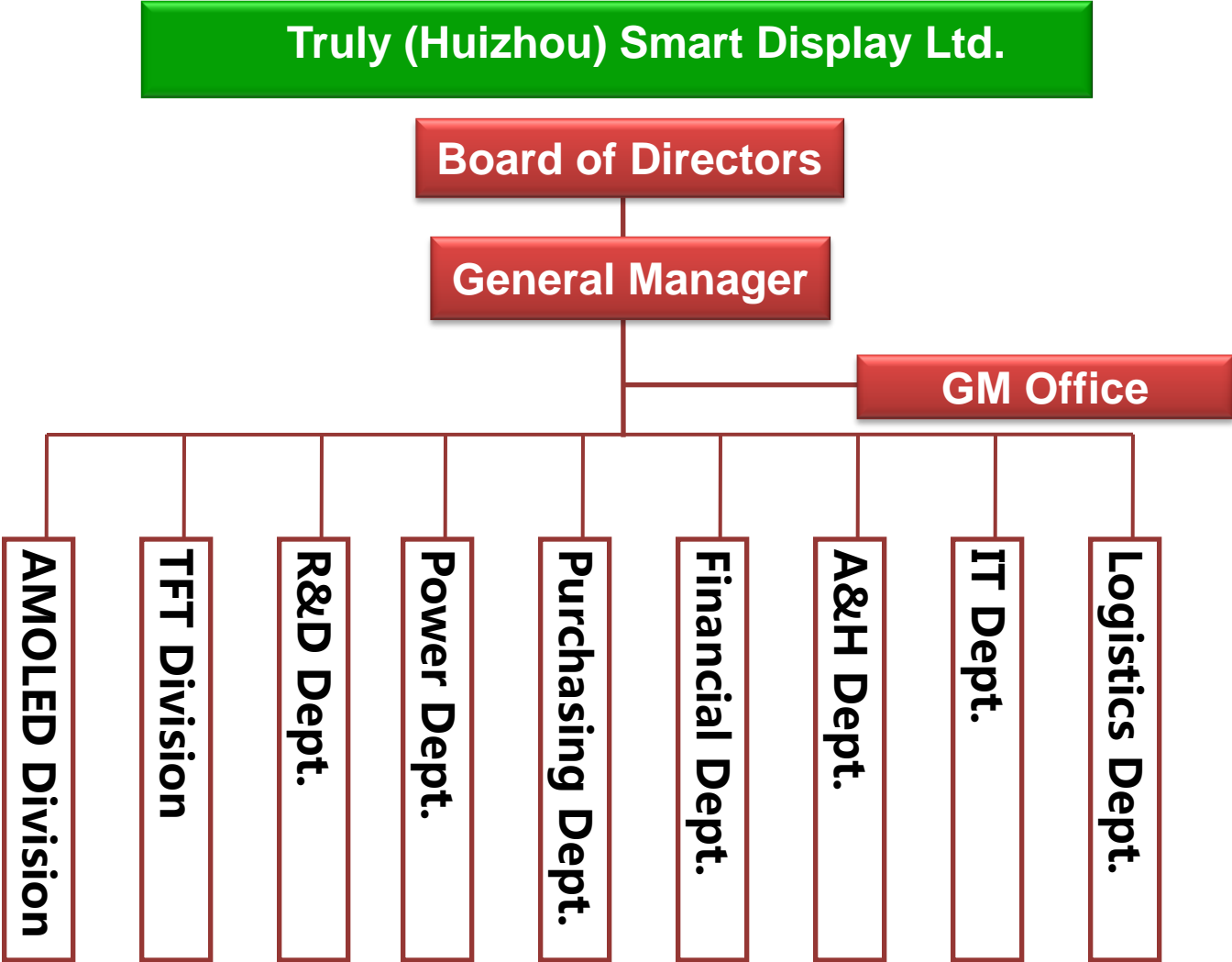
- Organization and Profile
- G4.5 Factory Profile
- R&D Resources
- Certification Scheme
- Project Progress and Leading Care

# Truly Organization Chart



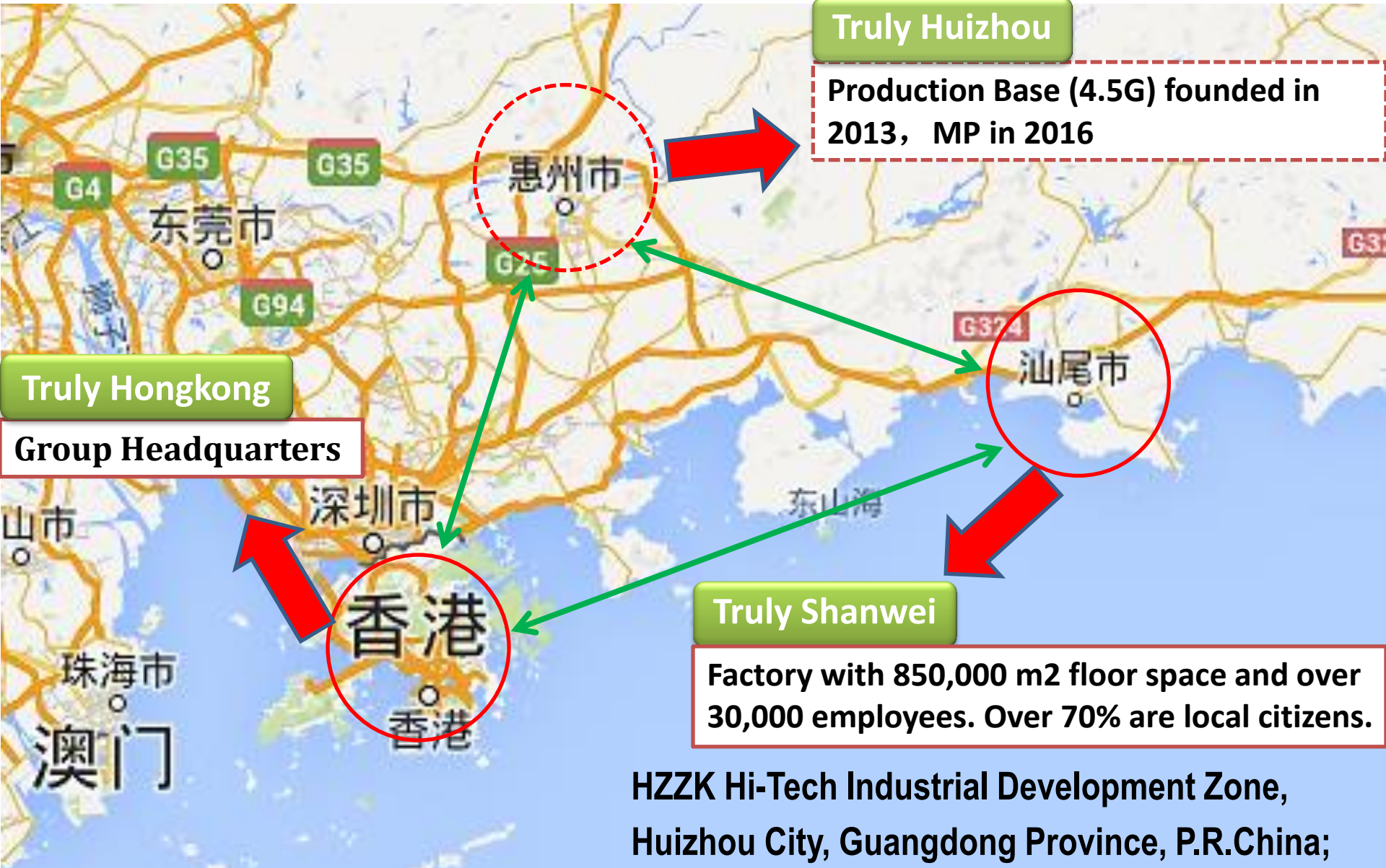


# Truly(Huizhou) Organization Chart



# Location

信利（惠州）智能显示有限公司  
TRULY (HUI ZHOU) SMART DISPLAY LTD

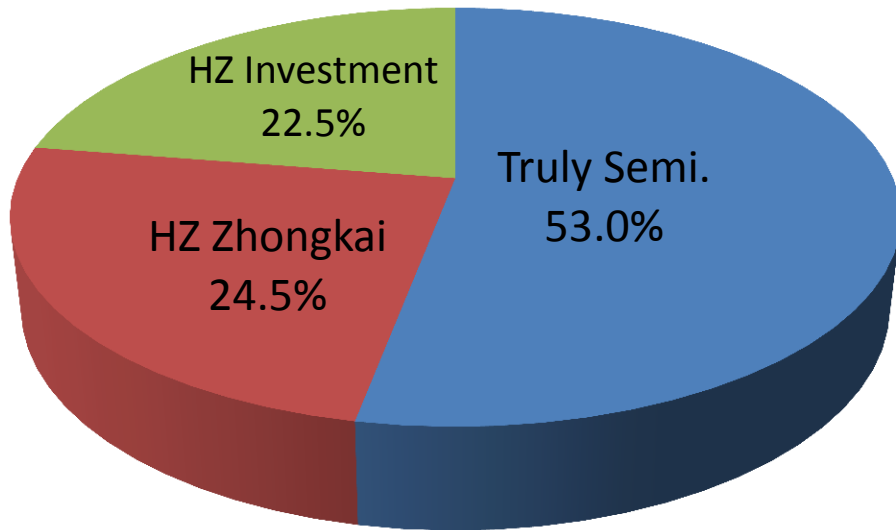


# Profile

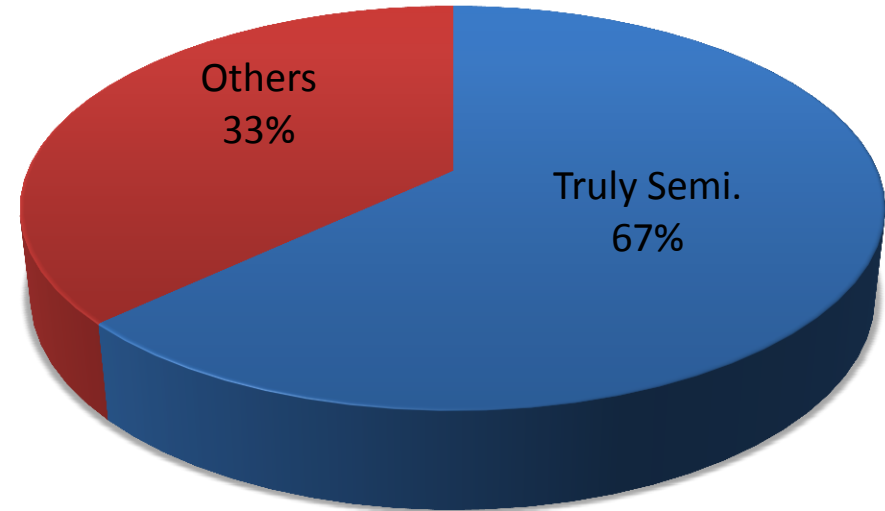
- ◆ Date of establishment : Dec.18<sup>th</sup> , 2013
- ◆ Registered capital: 2 Billion RMB
- ◆ Total investment: 6.3 Billion RMB
- ◆ Total area: 210,000m<sup>2</sup>
- ◆ Construction area: 310,000m<sup>2</sup>
- ◆ Clean room area: 100,000m<sup>2</sup>



Shareholders



Right of vote



## Shareholders:

I. Truly Semiconductors LTD.: 53% share & 67% of the voting share, full in charge of Truly(Huizhou) Smart Display LTD..

II. Huizhou Zhongkai: 24.5%.

III. HuiZhou Investment: 22.5%.



- Organization and Profile
- **G4.5 Factory Profile**
- R&D Resources
- Certification Scheme
- Project Progress and Leading Care

## AMOLED

- *G4.5*
- *Substrate size*  
*730mm\*920mm*
- *Substrate Thickness:*  
*0.5mm, 0.7mm*
- *MP Time: Q4 2016 (for rigid)*
- *Capacity:*  
*30K Sheet/month*  
*(15K for rigid, 15K for flexible)*
- *15K rigid about 620K/month*  
*for 5.5inch-FHD*

## TFT-LCD

- *G4.5*
- *Substrate size*  
*730mm\*920mm*
- *Substrate Thickness:*  
*0.5mm, 0.7mm*
- *MP Time: Q2 2016*
- *Capacity:*  
*60K Sheet/month*

## AMOLED

- TFT backplane: Low Temperature Poly-silicon (LTPS)
- Pixel density up to 500 PPI
- Diagonal size up to 10.4inch(Below 10.4inch mainly)
- Apply to Smartphone, Wearable , Automotive, Industrial and Medical display, etc.



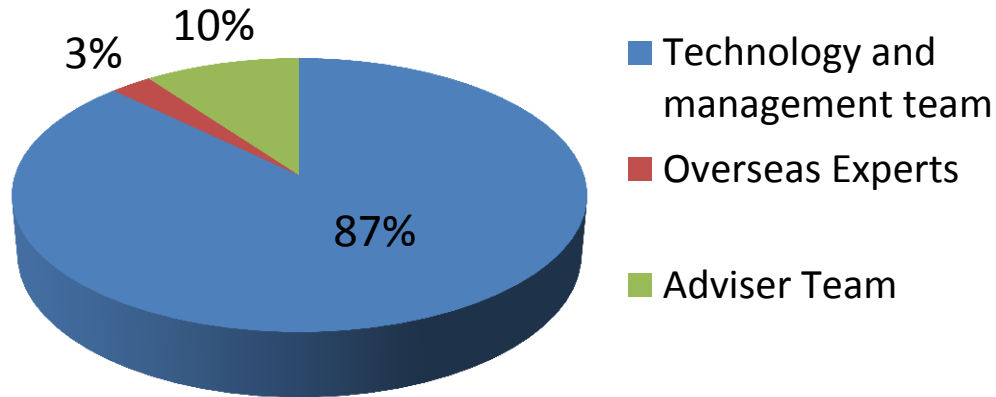
## TFT-LCD

- TFT backplane: amorphous-silicon
- Pixel density up to 300 PPI
- Diagonal size up to 10.4inch(Below 10.4inch mainly)
- Apply to Automotive, Industrial and Medical display, etc.

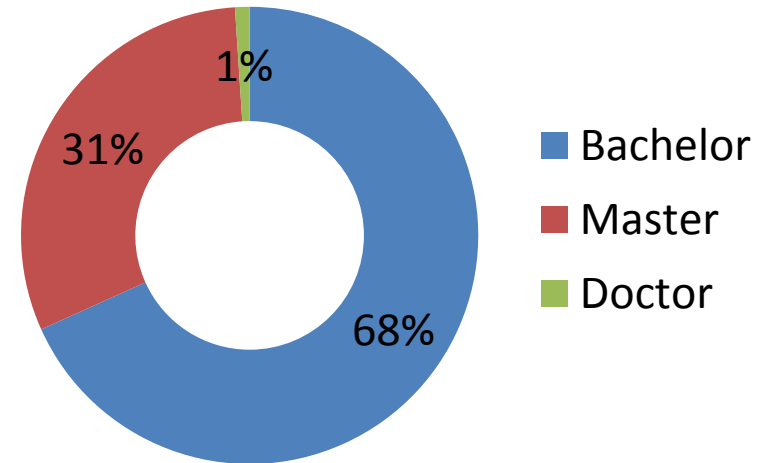


- Organization and Profile
- G4.5 Factory Profile
- **R&D Resources**
- Certification Scheme
- Project Progress and Leading Care

## R&D Resources



## Educational Background



- **Technology and management team:** Truly Group has 14years experiences in PMOLED and 8years experiences in TFT.
- **Overseas Experts:** 8 Overseas experts who have over 15 years experiences in LTPS and AMOLED, Take full time job in Truly(Huizhou).
- **Advisor Team:** About 30 oversea advisors, who have practical experiences in LTPS TFT and AMOLED field.

- Organization and Profile
- G4.5 Factory Profile
- R&D Resources
- **Certification Scheme**
- Project Progress and Leading Care

## Certification Scheme

Schedule Items	Phase1: Planning & Promotion	Phase2: Implement	Phase3: Internal Audit & Improve	Phase4: Certificate
ISO9001	2015.11~2016.5	2016.4~2016.7	2016.7~2016.9	2016.9~2016.12
ISO14001	2016.2~2016.6	2016.5~2016.8	2016.7~2016.9	2016.9~2016.12
QC080000	2016.2~2016.6	2016.5~2016.9	2016.8~2016.10	2016.11~2016.12
ISO/TS16949	2016.3~2016.8	2016.6~2016.12	2016.10~2017.2	2017.2~2017.6

- Organization and Profile
- G4.5 Factory Profile
- R&D Resources
- Certification Scheme
- Project Progress and Leading Care



# Project Schedule—TFT-LCD

Time	Items	Status
2014.Q2	Factory design and equipment layout finished;	Completed
2014.Q3	Fab. building begin;	Completed
2014.Q4	PO for long term facilities;	Completed
2015.Q1	PO for short term facilities;	Completed
2015.Q2	Fab. building completion ;	Completed
2015.Q3	Clean room finished;	Completed
2015.Q4	Facilities move in; Facilities setup;	Completed
2016.Q1~ Q2	Machine set-up and Hot-run	In Progress
2016.Q2	Pilot and Mass production;	In Progress

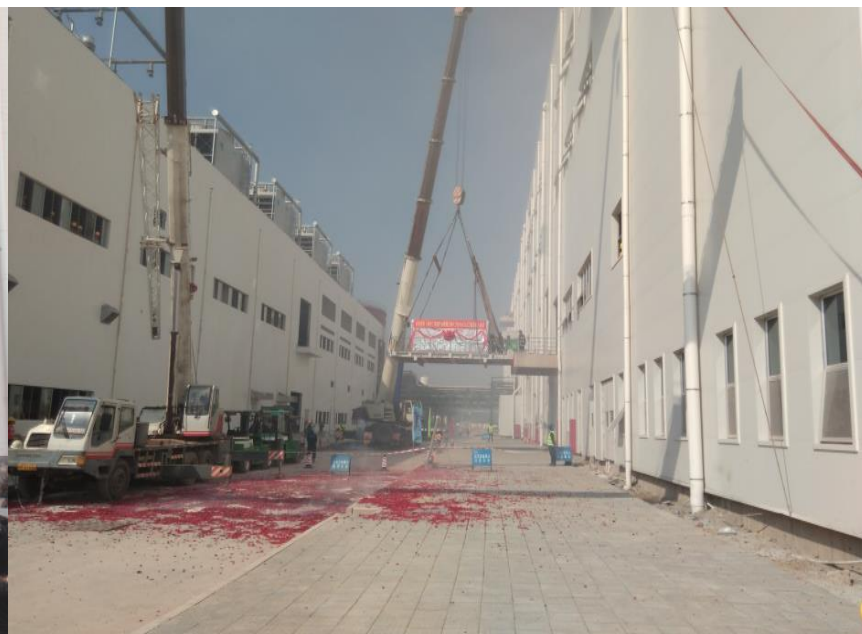
# Project Schedule—AM-OLED

Time	Items	Status
2014.Q2	Factory design and equipment layout finished;	Completed
2014.Q3	Fab. building begin;	Completed
2014.Q4	PO for long term facilities;	Completed
2015.Q1	PO for short term facilities;	Completed
2015.Q2	Fab. building completion ;	Completed
2015.Q3	Clean room finished;	Completed
2015.Q4 ~2016.Q1	Facilities move in; Facilities setup;	Completed
2016.Q2~ Q3	Pilot production;	In Progress
2016.Q4	Mass production;	

# Project Progress



2015.06.12 Fab. Building Topping Out



2015.10.23 Equipment Move in



# Project Progress



2015.11 Equipment Setup--AMOLED



# Project Progress



2016.03 Equipment Setup—TFT-LCD





Fab Aerial View

# Leading Care



- 2014-10-21 Executive vice governor Shaohua Xu



- 2015-05-13 The governor Xiaodan Zhu



- 2015-05-29 Provincial party committee secretary general Musheng Lin



- 2015-08-13 Provincial party committee secretary Chunhua Hu



# The Panorama of G4.5

信利（惠州）智能显示有限公司  
TRULY (HUI ZHOU) SMART DISPLAY LTD



# Thank You!

---

**TRULY® 信利**